

Dear Praying Friends,

On the back of our last e-mail it was suggested that rather than simply asking for prayer for certain needs, that we take a moment to share more explicitly some of the needs we have as they relate to the ministry here and how people can get involved. It is quite humbling and even somewhat awkward to do so, but we do realize that it is part of our obligation in keeping you all properly informed as partners in this work.

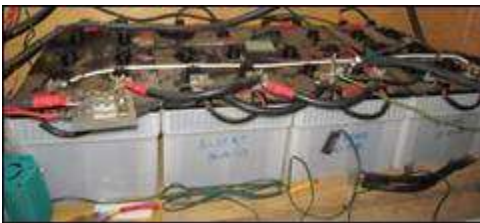
Over the last few years we have seen our monthly support decline to the point that we're now at an all-time low, nearly 51% of NTM's recommended support for a family our size working in Papua New Guinea. This change has taken place in part because of the change in the US economy, an increase in the cost of living here in PNG, several elderly supporters who could no longer continue their support, and some of our supporters going home to Glory, as well as others that have followed in the footsteps into full time ministries themselves. Praise the Lord!

Although our support has decreased, we continue to be able to live within our means here and are finding creative ways to cut costs; however it is becoming more difficult to plan ahead and budget for certain known expenses, let alone the unexpected.

Two examples of this being the recent replacement of our team vehicle and the sudden crash of our solar electric power system. (I'll share a bit more about these two items below). In addition to this, we are looking ahead to the purchase of plane tickets for our home assignment in the fall 2015.

### **First, our Team Vehicle...**

As we have shared in previous letters, our team vehicle that we had was beginning to have continued mechanical problems which was consuming valuable time (and money) which could be better spent doing translation, discipleship, etc. The Lord opened up an opportunity for us to replace it with a slightly newer one and the previous owner was gracious enough to work out a payment plan with us and our co-workers. Unfortunately, we still owe \$22,500 on the current vehicle. **We are praying for the sale of our previous vehicle to pay toward this debt. (approx. \$13-15,000USD if it sells at our current lowered asking price) Please join us in praying to that end.**



### **Secondly, our Solar Electric Power System...**

When we moved into North Wahgi in 2009 we had a very limited amount of time to piece together our solar power electric system, the backbone of our operations here, with equipment that we could find here on the field. Though we knew our batteries' lifespan was going to be limited, as they're not true solar batteries, we were really hoping to be able to finish out our current term before having to replace them. But that is simply not going to be possible as our batteries are rapidly dying and I've already had to remove one from the system all together.

We have been working with our NTM Tech Center to determine our solar needs. It has become obvious that because of the limited amount of sun we get, the solar panels we currently have are not sufficient to maintain our batteries. If

we simply put new batteries on the current system it will result in their premature failure. The Tech Team was quite impressed with the length of time that our system has held up for us up until now.

It has been estimated that it is going to cost approximately \$5,500 to replace our current batteries and solar panels. (10 solar panels at \$235/each + 4 batteries at \$569.80/each + cables/wires + shipping to PNG & customs).

This is not a letter requesting anything from you specifically. It is more of a personal update on our current financial state and the immediate needs that we see before us.

We greatly appreciate your continued involvement in this ministry through your prayers, support, and encouragement.

Should you or someone that you know be interested in helping in a missions based project or a short or long-term partnership, we would greatly appreciate you passing this need along as the Lord leads. \*Please see the information below.

∅ **Team Vehicle**--There has been a special account created for this project. Checks should be made payable to New Tribes Mission and have, "PNG Field Fund—North Wahgi Team Vehicle" in the memo or a separate note to accompany the check. It can be sent to New Tribes Mission, 1000 E First ST, Sanford, FL 32771

∅ **Regular support/Solar Electric project**—Funds for regular or one-time gifts of support or for the solar project can also be sent to New Tribes Mission, 1000 E First ST, Sanford, FL 32771 with a note in the memo or a separate note saying "For the ministry of Levi and Robyn Lenz". Online options are also available at <http://blogs.ntm.org/levi-robyn-lenz/give/>.

Thank you for joining with us in praying for the Lord's continued provision. We are continually humbled and blessed by how the Lord proves Himself faithful over and over. We are so encouraged by the spiritual growth that we are seeing in the daily lives of the believers here and it is a continued reminder of the purpose for which we are here.

On an exciting note and as a prayer reminder: The end of this month, we will be having another large Translation evaluation that will determine the clarity, comprehension and accuracy of the entire Gospel of Mark as well as portions of the book of Acts. We are praying that this evaluation time will be a greater encouragement to us all as we see His Team working together for His glory and the furtherance of His Truth among the Wahgi!

At His Service and For His Glory,

Levi, Robyn, Michael, Daniel, and Matthew Lenz

North Wahgi, PNG